

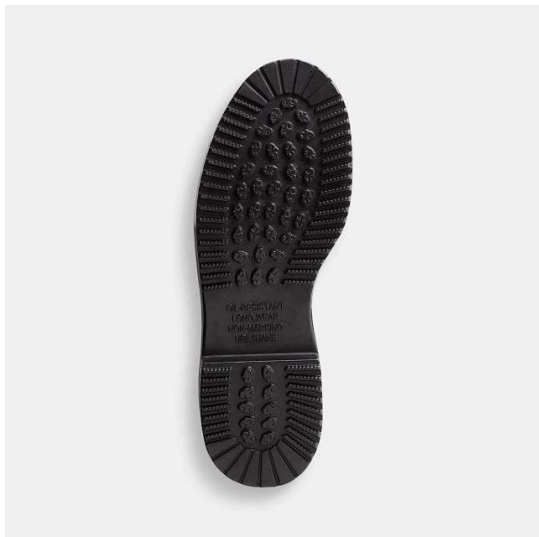


RED WING STYLE #8264 MEN'S SUPERSOLE® 9- INCH PULL-ON BOOT

EH ELECTRICAL HAZARD

PR PUNCTURE RESISTANT

ST STEEL TOE



ABOUT THE 8264

Name SuperSole®

Leather Type PU Coated

Construction SuperSole® Welt

Insole Swen-Flex®

Shank Fiberglass

Last 522

Outsole Mini Lug SuperSole® - Black

Non-Marking Yes

Country of Origin Made in USA

Safety Rating ASTM F2413-24, I/C, EH PR

Sizes E 25-12, 13
E 36-12, 13, 14

TECHNOLOGIES

Electrical Hazard, Puncture Resistant, Steel Toe, SuperSole, Swen Flex

OUTSOLE PROPERTIES

Oil/Gas Resistance	Best
Chemical Resistance	Better
Abrasion Resistance	Better
Heat Resistance	Good



redwingsafety.com | © Red Wing Shoe Company, Inc.